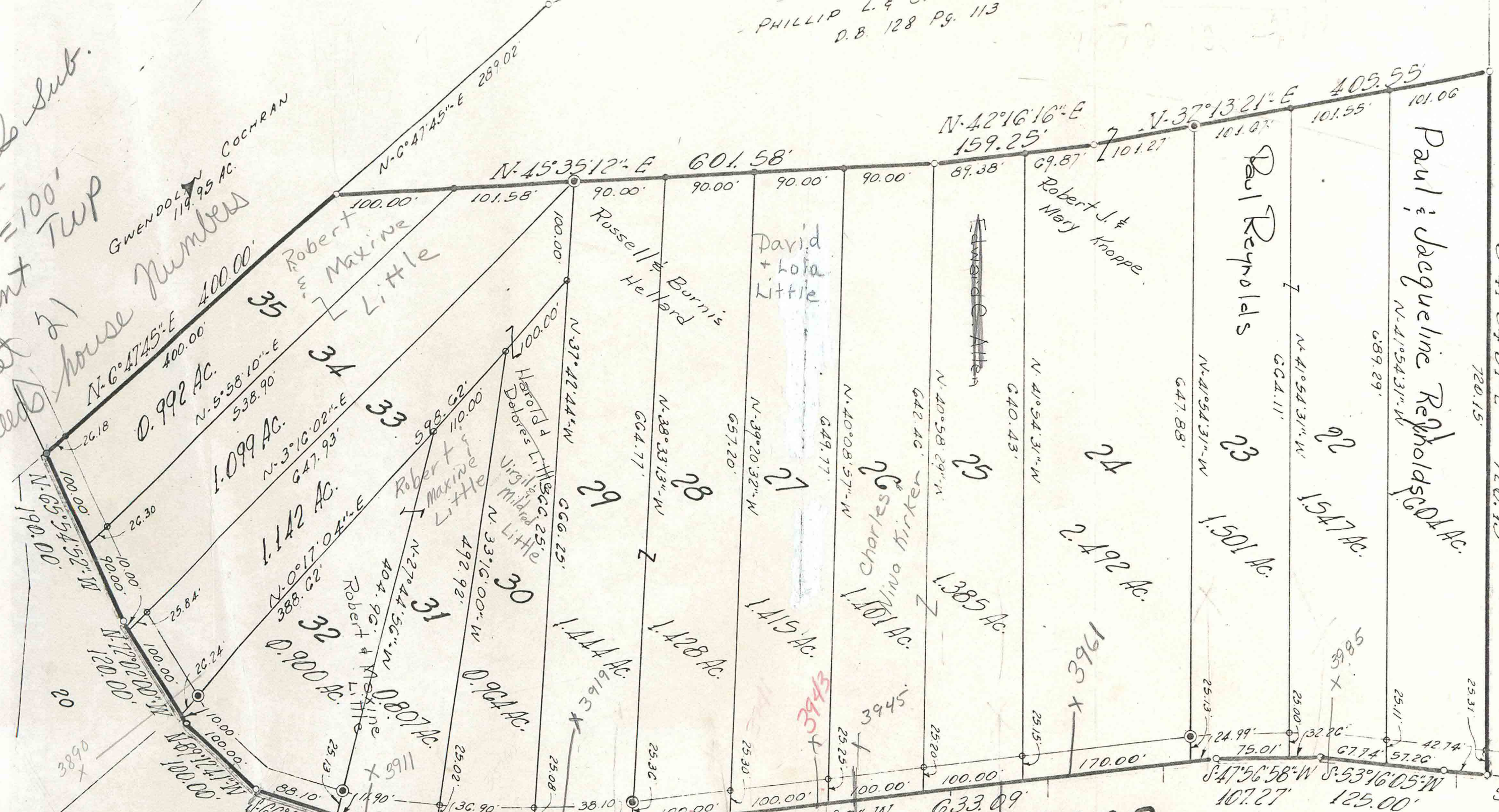


Harbor Hills Sub. Section II Scale 1"=100' Pleasant Twp Sheet 21

Harbor Hills Section Two Subdivision Ballard Smith's Brown County, Ohio Survey No. 400 20.121 Acres 1"=100' Mapping



OLD A & P ROAD

HARBOR HILLS SUBDIVISION PL. BK. 5 PG. 68

ENGINEER'S APPROVE I hereby approve the boundaries shown on this plat. Commissioned and do hereby file the plat. Attest: [Signature]

NOTE: ALL SIDE LOTS DISTANCES ARE TO CENTERLINE OF A & P ROAD 0.951 AC.

3685/410/4095